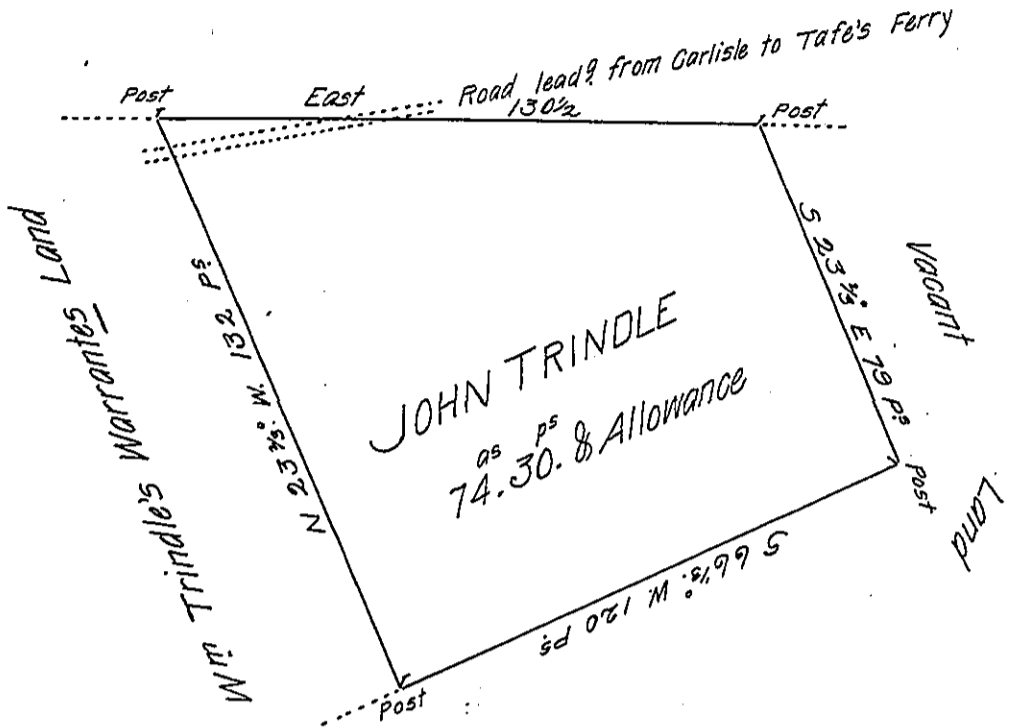


Caleb Sweesy



A Draught of a Tract of Land situate partly in Allen & Partly in East Pensboro Townships in the County of Cumberland containing Seventy four Acres & thirty Perches and a proportionable Allowance of Six P Cent. for Roads &c. Survey'd for John Trindle the 17<sup>th</sup> Day of December 1766 in pursuance of an Order of Survey Dated September 27<sup>th</sup> 1766 and Numbered 1375.

John Armstrong

D.S.

To John Lukens Esq<sup>r</sup> }  
 Surveyor General }

IN TESTIMONY that the above is a copy of the original remaining on file in the Department of Internal Affairs of Pennsylvania, made conformably to an Act of Assembly approved the 16th day of February, 1833, I have hereunto set my Hand and caused the Seal of said Department to be affixed at Harrisburg, this thirtieth day of March 1906.

*Lucas D. Brown*  
 Secretary of Internal Affairs.